

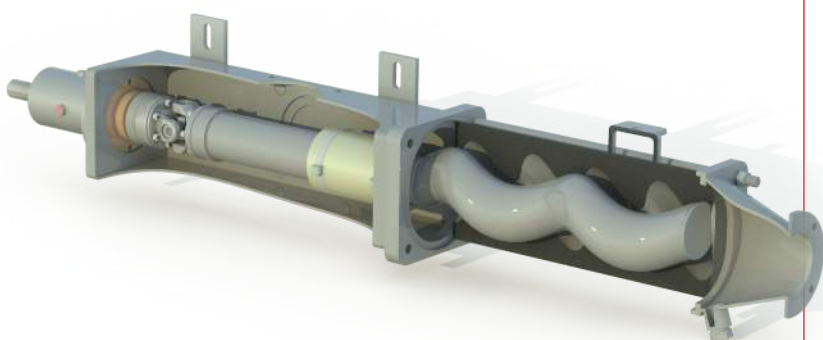
## Trailer Features

- Diesel Engine 37 KW@ 3000 RPM powered with emissions to EU Stage 3 A
- Eccentric screw pump with a flow rate of upto 1800 LPM \* and 6.5 bar pressure
- 910 Kg GVW Trailer
- Purpose designed to cope with tough working condition like heavy sludge
- Self priming and designed for easy operation
- Built in manual operated clutch unit for smooth engagement
- Throttle allowing variable speed depending upon the type of application

\*Rated power with water at 540 RPM and zero back pressure

## Molex MkV Pump Features

- Abrasion resistant low friction hollow rotor
- Non-Swelling stator made of special rubber compound
- Ideal for emergency flood water pumping
- Can be used on sewage and pumping through agricultural slurries
- Effective even high viscous liquid
- High delivery pressure upto 6 bar (90 PSI)
- Good suction lift capabilities of over 8 metres
- Capable of lifting liquids containing 20 % or more solids
- No Foaming



## Options available for Oil Based sludge in a non ATEX zone

- Draining of Oil storage tanks and heavy Industrial sludge
- Units fitted with Engine Shutdown valve spark arrestor
- Special grade stator material GF 42 Nitrile
- Complete with 10 m Earthing reel and earthing points

## Other Options

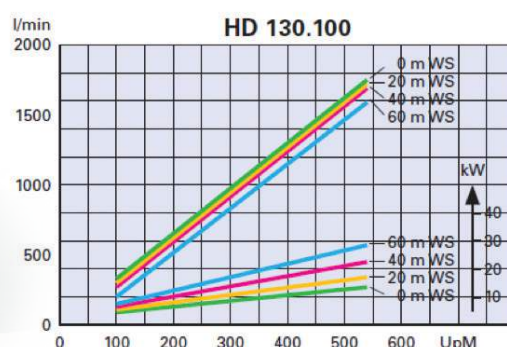
- Electric motor 22 KW with Gear box and Online starter
- Screw Pump can itself also be supplied freestanding
- Option of Keyed or splined shaft in pump
- Pump mounted on Tanker for loading and transporting or spreading

## Typical Areas of Application

- Agriculture
- Industry
- Bio-Gas plant

### Molex MkV Pump Data

Pump Type	HD 130/100
Rotor Diameter (mm)	100
Speed Maximum (RPM)	640
Pressure Maximum (bar)	6.5
Dimensions (mm)	1642 x 235



Distributed by:

**Whale Enterprise PVT Ltd.**

1/1D Vilankurichi Road, Near Senthottam, Kalapatti,  
Coimbatore - 641 048, Tamilnadu, India

Telephone: +91 95009 45511

sales@whaleenterprise.in www.whaleenterprise.in





*Purpose designed for tough conditions*



*Whale Screw Pump Trailer*